



Thermal Transfer Industrial
ZX1000Xi series
Printer



High output, speed industrial barcode printer.

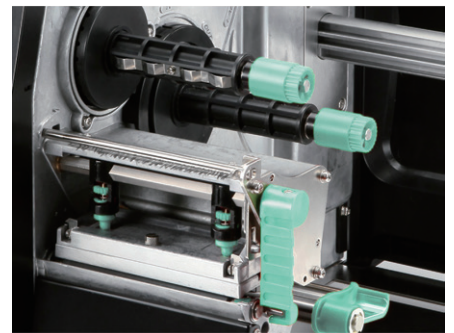
Various standard interfaces facilitate integration into several environments. Compact and robust steel design will fulfill your most demanding applications.



- Large intuitive touch screen LCD allows the user to be in control.



- Three USB host ports standard allows integration with several devices.



- High performance printer designed for high volume applications in mind
- Up to 14 ips print speed.
- New hardware ideal for both high volume or precision printing applications.

ZX1000Xi series

Thermal Transfer Industrial Printer

Model Name		ZX1200Xi	ZX1300Xi
Print Method		Thermal Transfer / Direct Thermal	
Resolution		203 dpi (8 dots/mm)	300 dpi (12 dots/mm)
Print Speed		Up to 14 IPS (356mm/s)	Up to 10 IPS (254 mm/s)
Print Width		4.09" (104 mm)	4.09" (104 mm) Up to (105.7mm)
Print Length		Min. 0.16" (4 mm)** – Max. 180" (4572 mm)	Min. 0.16" (4 mm)** – Max. 85" (2159 mm)
Processor		32-bit RISC CPU	
Memory	Flash	128 MB Flash (60 MB for user storage)	
	SDRAM	32 MB	
Sensor Type		Adjustable reflective sensor and transmissive sensor, left aligned	
Media	Type	Continuous form, gap labels, black mark sensing, and punched hole; label length set by auto sensing or programming	
	Width	Tear : Min. 1" (25.4 mm) – Max. 4.65" (118 mm) Cutter : Max. 4.61" (117 mm) Dispenser / Rewind : Max. 4.64" (118 mm)	
	Thickness	Min. 0.003" (0.076 mm) – Max. 0.01" (0.25 mm)	
	Label roll diameter Core diameter	Max. 8" (203.2 mm) Min. 1.5" (38.1 mm) – Max. 3" (76.2 mm)	
Ribbon	Types	Wax, wax/resin, resin	
	Length	Max. 1476.38' (450 m)	
	Width	Min. 1.18" (30 mm) – Max. 4.33" (110 mm)	
	Ribbon roll diameter Core diameter	3" (76.2 mm) 1" (25.4 mm)	
Printer Language		EZPL, GEPL, GZPL auto switch	
Software	Label design software	GoLabel (for EZPL only)	
	Driver	Windows 2000, XP, Vista, Windows 7, 8.1 and 10 , Windows Server 2003 & 2008 , MAC , Linux	
	DLL	Win CE, .NET, Andriod, Windows Mobile, Windows 2000 / XP / VISTA / Windows 7 / Windows 8.1	
Resident Fonts	Bitmap Fonts	Bitmap fonts 90°, 180°, 270° rotatable, single characters 90°, 180°, 270° rotatable Bitmap fonts 8 times expandable in horizontal and vertical directions	
	TTF Fonts	TTF Fonts (Bold / Italic / Underline) . 0°, 90°, 180°, 270° rotatable	
Download Fonts	Bitmap Fonts	90°, 180°, 270° rotatable, single characters 90°, 180°, 270° rotatable	
	Asian Fonts	16x16, 24x24. Traditional Chinese (BIG-5), Simplified Chinese(GB2312), Japanese (S-JIS), Korean (KS-X1001)	
Barcodes	1-D Bar Codes	90°, 180°, 270° rotatable and 8 times expandable in horizontal and vertical directions China Postal Code, Codabar, Code 11, Code 32, Code 39, Code 93, Code 128 (subset A, B, C), EAN-8, EAN-13, EAN 8/13 (with 2 & 5 digits extension), EAN 128, FIM, German Post Code, GS1 DataBar, HIBC, Industrial 2 of 5 , Interleaved 2-of-5 (12 of 5) , Interleaved 2- of-5 with Shipping Bearer Bars, ISBT – 128, ITF 14, Japanese Postnet, Logmars, MSI, Postnet, Plessey, Planet 11 & 13 digit, RPS 128, Random Weight, Standard 2 of 5, Telepen, UPC-A, UPC-E, UPC-A and UPC-E with EAN 2 or 5 digit extension, UCC 128, UCC/EAN-128 K-Mart	
	2-D Bar Codes	Aztec code, Code 49, Codablock F , Datamatrix code, MaxiCode, Micro PDF417, Micro QR code, PDF417, QR code, TLC 39	
	Code Pages	Codepage 437, 737, 850, 851, 852, 855, 857, 860, 861, 862, 863, 865, 866, 869	
Graphics		Windows 1250, 1251, 1252, 1253, 1254, 1255, 1257 Unicode UTF8 , UTF16BE , UTF16LE	
Interfaces		Resident graphic file types are BMP and PCX, other graphic formats are downloadable from the software	
Control Panel		<ul style="list-style-type: none"> • USB 2.0 (B-Type) • Serial port: RS-232 (DB-9) • IEEE 802.3 10/100 Base-Tx Ethernet port (RJ-45) • 3 USB Host (A-Type). 2 ports at the front panel, 1 port at the rear panel 	
		<ul style="list-style-type: none"> • Backlight 3.2" touch screen LCD • 1 Power on/standby button with green color LED backlight • 1 Control key : FEED / PAUSE / CANCEL with dual color LED backlight: Ready (Green); Error (Red) • 1 Calibration button at rear panel 	
	Real Time Clock	Standard	
	Power	Auto Switching 100-240V AC, 50-60Hz	
Environment	Operation temperature	41°F to 104°F (5°C to 40°C)	
	Storage temperature	-4°F to 140°F (-20°C to 60°C)	
Humidity	Operation	20-85%, non-condensing	
Agency Approvals	Storage	10-90%, non-condensing	
Dimension	Length	18.30" (465 mm)	
	Height	12.28" (312 mm)	
	Width	10.59" (269 mm)	
Weight		30 lbs (13.6 Kg), excluding consumables	
Options		Cutter	
		Parallel port adaptor module (Centronic female 36-pin)	
		Bluetooth	
		Wireless LAN (IEEE 802.11 b/g/n)	
		Applicator Interface (DSUB female 15-pin) External label rewinder Label Dispenser + Internal Rewinder	

* Specifications are subject to change without notice. All company and/or product names are trademarks and/or registered trademarks of their respective owners.

** Minimum print height and maximum print speed specification compliance can be dependent on non-standard material variables such as label type, thickness, spacing, liner construction, etc. GoDEX is pleased to test non-standard materials for minimum print height, and maximum print speed capability.

Applications

Applications for Labels & Barcodes

ZX1000Xi Series as versatile as for most applications.



Special Materials

Small components labeling, name Plates, Plastic tubes, Plastic cards, Cable labeling.

Warehouses, Logistic & Transportation

Stack label, Product label, Postal slip
Storage management, Dispatch label,
Packaging label, Delivery receipt, etc.

Manufacturing

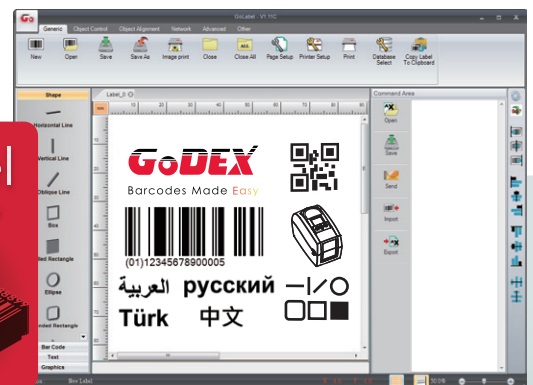
Product label, Content label,
Packaging label, Administrative slip,
In & Out record slip, etc.

GoDEX LABEL DESIGN SOFTWARE

GoLabel Software / User Friendly

GoLabel is based on a WYSIWYG (what you see is what you get) user interface, makes everything so easy for you to create and print barcode labels. GoLabel is the first-choice label design software that you can't miss it!

Go visit www.godexintl.com and download GoLabel to experience it!



GoDEX RIBBONS

High quality GoDEX thermal transfer ribbons.

GoDEX offers premium thermal transfer ribbons that will fit most of your printing applications.

- Wax
- Wax/ Resin
- Resin
- Near Edge

