



Industrial Printers BP500L Series

Mighty performance in portable body

BP500L demonstrates the combination of mobility and robustness perfectly and can be the most helpful companion for retail, manufacturing, storage, logistic, government applications.



- Wi-Fi connection available.
- 32 MB SDRAM and 128 MB Flash memory - Upgraded memory (32 MB SDRAM / 128 MB Flash) allows more room for data saving.

- Dual LED indicator and calibration button provides instantaneous response.
- Print speed up to 5 IPS (127 mm/s) / 7 IPS (177 mm/s), with 300M ribbon and external label stand, mass printing is just as easy as a fingertip away.

Specification

BP500L Series

Industrial Barcode Printer

Model	BP500L	BP520L	BP530L
Print Method	Thermal Transfer / Direct Thermal		
Resolution	203 dpi (8 dots/mm)	203 dpi (8 dots/mm)	300 dpi (12 dots/mm)
Print Speed	5 IPS (127 mm/s)	7 IPS (177 mm/s)	5 IPS (127 mm/s)
Print Width	4.25" (108 mm)	4.25" (108 mm)	4.16" (105.7 mm)
Print Length	Min. 0.16" (4 mm)** Max. 68" (1727 mm)	Min. 0.16" (4 mm)** Max. 68" (1727 mm)	Min. 0.16" (4 mm)** Max. 30" (762 mm)
Processor	32 Bit RISC CPU		
Memory Flash	128 MB Flash (60 MB for user storage)		
SDRAM	32 MB SDRAM		
Sensor Type	Adjustable reflective sensor (full range) Fixed transmissive sensors, central aligned		
Media Types	Continuous form, gap labels, black mark sensing, and punched hole; label length set by auto sensing or programming		
Width	1" (25.4 mm) Min. - 4.64" (118 mm) Max.		
Thickness	0.0024" (0.06 mm) Min. - 0.01" (0.25 mm) Max.**		
Label Roll Diameter	Max. 6" (152 mm)		
Core Diameter	1" (25.4 mm), 1.5" (38.1 mm), 3" (76.2 mm)		
Ribbon Types	Wax, wax / resin, resin		
Length	981" (300 m)		
Width	1.18" Min. - 4.33" (30 mm - 110 mm) Max.		
Ribbon Roll Diameter	2.67" (68 mm)		
Core Diameter	1" (25.4 mm)		
Printer Language	EZPL, GEPL, GZPL auto switch		
Software	GoLabel (for EZPL only)		
Label Design Software			
Driver	MAC、Linux、Windows 2000, XP, Vista, Windows 7, 8.1 and 10, Windows Server 2003 & 2008		
DLL	Win CE、.NET、Windows Mobile, Windows 2000 / XP / VISTA / Windows 7 / Windows 8.1 / Android		
Resident Fonts	Bitmap Fonts Bitmap fonts: 6, 8, 10, 12, 14, 18, 24, 30, 16X26 and OCR A & B Bitmap fonts 90°, 180°, 270° rotatable, single characters 90°, 180°, 270° rotatable Bitmap fonts 8 times expandable in horizontal and vertical directions TTF Fonts (Bold / Italic / Underline). 0°, 90°, 180°, 270° rotatable		
Download Fonts	Bitmap Fonts Bitmap fonts 90°, 180°, 270° rotatable, single characters 90°, 180°, 270° rotatable Asian Fonts 16x16, 24x24. Traditional Chinese (BIG-5), Simplified Chinese (GB2312), Japanese (S-JIS), Korean (KS-X1001) 90°, 180°, 270° rotatable and 8 times expandable in horizontal and vertical directions TTF Fonts 90°, 180°, 270° rotatable, single characters 90°, 180°, 270° rotatable		
Barcodes	1-D Bar codes Code 39, Code 93, EAN-8, EAN-13, EAN 8/13 (with 2 & 5 digits extension), UPC-A, UPC-E, UPC-A and UPC-E with EAN 2 or 5 digit extension, Interleaved 2-of-5 (I 2 of 5), Interleaved 2- of 5 with Shipping Bearer Bars, Codabar, Code 128 (subset A, B, C), EAN 128, RPS 128, UCC 128, UCC/EAN-128 K-Mart, Random Weight, Postnet, ITF 14, China Postal Code, HIBC, MSI, Plessey, Telepen, FIM, GS1 DataBar, German Post Code, Planet 11 & 13 digit, Japanese Postnet, Standard 2 of 5, Industrial 2 of 5, Logmars, Code 11, ISBT -128, Code 32		
	2-D Bar codes PDF417, Datamatrix code, MaxiCode, QR code, Micro PDF417, Micro QR code and Aztec code, Code 49, Codablock F, TLC 39		
Code Pages	CODEPAGE 437, 850, 851, 852, 855, 857, 860, 861, 862, 863, 865, 866, 869, 737 WINDOWS 1250, 1251, 1252, 1253, 1254, 1255, 1257 Unicode UTF8、UTF16BE、UTF16LE		
Graphics	Resident graphic file types are BMP and PCX, other graphic formats are downloadable from the software		
Interfaces	USB 2.0 (B-Type)		
Control Panel	Two groups of two-color LED indicator : Ready、Status Calibration button Control key: FEED Power on/off button		
Power	Auto Switching 100-240 V AC, 50-60 Hz.		
Environment	Operation 41°F to 104°F (5°C to 40°C)		
	Temperature Storage Temperature -4°F to 122°F (-20°C to 50°C)		
	Humidity Operation 30 - 85 %, non-condensing.		
	Storage 10 - 90 %, non-condensing.		
Agency Approvals	CE (EMC)、FCC Class A、UL、cUL、CB、CCC、BIS		
Dimension	Length 12.5" (320 mm)		
	Height 8.7" (220 mm)		
	Width 10.8" (275 mm)		
Options & Accessories	Cutter Label dispenser with label sensor module External label rewinder WIFI printer server module (distributor install)		

**Specifications are subject to change without notice. All company and / or product names are trademarks and/or registered trademarks of their respective owners. Minimum print height and maximum print speed specification compliance can be dependent on non-standard material variables such as label type, thickness, spacing, liner construction, etc. GoDEX is pleased to test non-standard materials for minimum print height and maximum print speed capability.

Specification

BP500L Series

Industrial Barcode Printer

Model	BP500L (DT)	BP520L (DT)
Print Method	Direct Thermal	
Resolution	203 dpi (8 dots/mm)	203 dpi (8 dots/mm)
Print Speed	5 IPS (127 mm/s)	7 IPS (177 mm/s)
Print Width	4.25" (108 mm)	4.25" (108 mm)
Print Length	Min. 0.16" (4 mm)** Max. 68" (1727 mm)	Min. 0.16" (4 mm)** Max. 68" (1727 mm)
Processor	32 Bit RISC CPU	
Memory Flash SDRAM	128 MB Flash (60 MB for user storage) 32 MB SDRAM	
Sensor Type	Adjustable reflective sensor (full range) Fixed transmissive sensors, central aligned	
Media Types	Continuous form, gap labels, black mark sensing, and punched hole; label length set by auto sensing or programming	
Width	1" (25.4 mm) Min. - 4.64" (118 mm) Max.	
Thickness	0.0024" (0.06 mm) Min. - 0.01" (0.25 mm) Max.**	
Label Roll Diameter	Max. 6" (152 mm)	
Core Diameter	1" (25.4 mm), 1.5" (38.1 mm), 3" (76.2 mm)	
Printer Language	EZPL, GEPL, GZPL auto switch	
Software Label Design Software	GoLabel (for EZPL only)	
Driver DLL	MAC、Linux、Windows 2000, XP, Vista, Windows 7, 8.1 and 10, Windows Server 2003 & 2008 Win CE, .NET, Windows Mobile, Windows 2000 / XP / VISTA / Windows 7 / Windows 8.1 / Android	
Resident Fonts Bitmap Fonts	Bitmap fonts: 6, 8, 10, 12, 14, 18, 24, 30, 16x26 and OCR A & B Bitmap fonts 90°, 180°, 270° rotatable, single characters 90°, 180°, 270° rotatable Bitmap fonts 8 times expandable in horizontal and vertical directions	
TTF Fonts	TTF Fonts (Bold / Italic / Underline), 0°, 90°, 180°, 270° rotatable	
Download Fonts Bitmap Fonts	Bitmap fonts 90°, 180°, 270° rotatable, single characters 90°, 180°, 270° rotatable	
Asian Fonts	16x16, 24x24. Traditional Chinese (BIG-5), Simplified Chinese (GB2312), Japanese (S-JIS), Korean (KS-X1001) 90°, 180°, 270° rotatable and 8 times expandable in horizontal and vertical directions	
TTF Fonts	90°, 180°, 270° rotatable	
Barcodes 1-D Bar codes	Code 39, Code 93, EAN-8, EAN-13, EAN 8/13 (with 2 & 5 digits extension), UPC-A, UPC-E, UPC-A and UPC-E with EAN 2 or 5 digit extension, Interleaved 2-of-5 (I 2 of 5), Interleaved 2-of-5 with Shipping Bearer Bars, Codabar, Code 128 (subset A, B, C), EAN 128, RPS 128, UCC 128, UCC/EAN-128 K-Mart, Random Weight, Postnet, ITF 14, China Postal Code, HIBC, MSI, Plessey, Telepen, FIM, GS1 DataBar, German Post Code, Planet 11 & 13 digit, Japanese Postnet, Standard 2 of 5, Industrial 2 of 5, Logmars, Code 11, ISBT-128, Code 32, PDF417, Datamatrix code, MaxiCode, QR code, Micro PDF417, Micro QR code and Aztec code, Code 49, Codablock F, TLC 39	
2-D Bar codes	PDF417, Datamatrix code, MaxiCode, QR code, Micro PDF417, Micro QR code and Aztec code	
Code Pages	CODEPAGE 437, 850, 851, 852, 855, 857, 860, 861, 862, 863, 865, 866, 869, 737 WINDOWS 1250, 1251, 1252, 1253, 1254, 1255, 1257 Unicode UTF8、UTF16BE、UTF16LE	
Graphics	Resident graphic file types are BMP and PCX, other graphic formats are downloadable from the software	
Interfaces	USB 2.0 (B-Type)	
Control Panel	Two groups of two-color LED indicator: Ready、Status Calibration button Control key: FEED Power on/off button	
Power	Auto Switching 100-240 V AC, 50-60 Hz.	
Environment Operation Temperature	41°F to 104°F (5°C to 40°C)	
Storage Temperature	-4°F to 122°F (-20°C to 50°C)	
Humidity Operation	30 - 85 %, non-condensing.	
Storage	10 - 90 %, non-condensing.	
Agency Approvals	CE (EMC)、FCC Class A、UL、cUL、CB、CCC、BIS	
Dimension Length	12.5" (320 mm)	
Height	8.7" (220 mm)	
Width	10.8" (275 mm)	
Options & Accessories	Cutter Label dispenser with label sensor module External label rewinder WIFI printer server module (distributor install)	

**Specifications are subject to change without notice. All company and / or product names are trademarks and/or registered trademarks of their respective owners.

Minimum print height and maximum print speed specification compliance can be dependent on non-standard material variables such as label type, thickness, spacing, liner construction, etc. GoDEX is pleased to test non-standard materials for minimum print height and maximum print speed capability.

Applications

Applications for Labels & Barcodes

BP500L series is as versatile as for most applications.



Retail

Receipt, Ingredient label, Price tag, Content label, Registration receipt, Postal slip, etc.

Warehouses, Logistic & Transportation

Stack label, Product label, Postal slip
Storage management, Dispatch label, Packaging label, Delivery receipt, etc.

Manufacturing

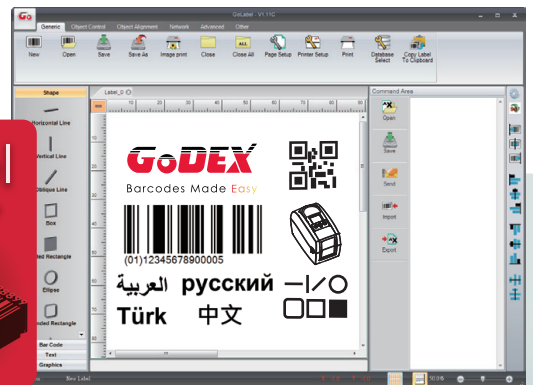
Product label, Content label, Packaging label, Administrative slip, In & Out record slip, etc.

GoDEX LABEL DESIGN SOFTWARE

GoLabel Software / User Friendly

GoLabel is based on a WYSIWYG (what you see is what you get) user interface, makes everything so easy for you to create and print barcode labels. GoLabel is the first-choice label design software that you can't miss it!

Go visit www.godexintl.com and download GoLabel to experience it!



GoDEX RIBBONS

High quality GoDEX thermal transfer ribbons.

GoDEX offers premium thermal transfer ribbons that will fit most of your printing applications.

- Wax
- Wax/ Resin
- Resin
- Near Edge

